



Model Number

V15L-M16-500
Receptacles, M12/M16, 5-pin

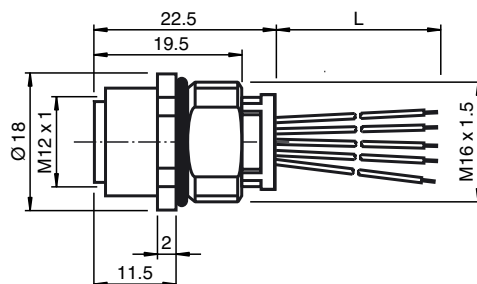
Features

- Front/screw mounting

Accessories

LOCKNUT M16 NICKEL BRASS
Nut, nickel-plated brass

Dimensions



Technical data

General specifications

Number of pins	5
Connection 1	socket
Construction type 1	straight
Threading 1	M12
Connection 2	cable end
UL File Number	E191152

Electrical specifications

Rated voltage	U_r	63 V
Rated current	I_r	12 A at 40 °C
Volume resistance		$\leq 5 \text{ m}\Omega$
Surge protection		Category III

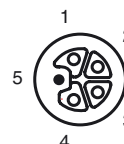
Ambient conditions

Ambient temperature	-40 ... 85 °C (-40 ... 185 °F)
Pollution degree	3

Mechanical specifications

Degree of protection	IP68	
Connection	flexible leads (16 AWG)	
Material		
Contacts	CuZn	
Contact surface	Au	
Threaded bushings	Zinc die-casting, nickel-plated	
Cable		
Length	L	500 mm
Mating cycles		≥ 100

Electrical connection

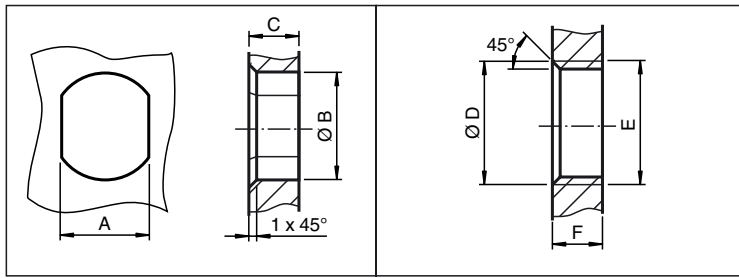


Electrical connection

1	BN
2	WH
3	BU
4	BK
5	GY

Release date: 2019-04-08 16:03 Date of issue: 2019-04-08 322924_eng.xml

Installation Note



	A	B	C	D	E	F
M8	7.1 ^{+0.1}	Ø 8.2 ^{+0.1}	2 - 4 mm	-	M8x0.5	2 - 4 mm
M12	11 ^{+0.1}	Ø 12.2 ^{+0.1}	< 4 mm	-	M12x1	< 4.5 mm
M16	13.5 ^{+0.1}	Ø 16.1	< 4.5 mm	Ø 17 ^{+0.2}	M16x1.5	> 2.5 mm
M20	13.5 ^{+0.1}	Ø 20.1	-	Ø 20 ^{+0.2}	M20x1.5	< 6 mm
PG9	13.5 ^{+0.1}	Ø 15.3 ^{+0.1}	< 4.5 mm	Ø 16	PG9	> 2.5 mm
PG13.5	18.8 ^{+0.1}	Ø 20.5 ^{+0.1}	-	Ø 22 ^{±0.1}	PG13.5	-